



**GAS**  
FIREPLACE INSERTS





# Enviro

HEARTH PRODUCTS



## Designed to heat. Built to Last.

For over 25 years, unsurpassed quality and craftsmanship have made us an industry leader in innovative heating systems. Design, functionality, and efficiency merge to create exceptional products that will exceed all expectations. Whether time-honored traditional or bold and modern, our dynamic range of products will compliment any home décor. With a complete line of fireplace inserts, zero-clearance fireplaces, and freestanding stoves, we have the perfect solution for your heating requirements. We won't just meet your expectations; we'll exceed them...



Designed to heat.  
Built to last.

*E33 Fireplace Insert – Powder Coated Finish Borderview Plus Surround, Fluted Liner, and Log Set*





Q1 Fireplace Insert – Modern Surround, Porcelain Liner, and Glass



Q1 Fireplace Insert – Modern Surround, Ledgerstone Liner, and Coal



Q1 Fireplace Insert – Contemporary Surround w/Trimmable Panel, Brick Liner, and Log Set

## Design Features

- Clean Face Look — No Louvers
- SIT Valve 820 (Standing Pilot)
- SIT Valve 885 (IPI System with Remote)
- Glass Size: 17½" x 19¾", 345½ in²
- High Definition Log Set
- 150 CFM Room Fan (with variable control)
- Limited Lifetime Warranty
- Quick Access Valve Controls

## Available Options

- Remote or Thermostat Control
- Glass, Coal, or Log Set
- Liners Options:
  - Brick Liner with Logs
  - Porcelain Liner with Glass or Logs
  - Ledgerstone Liner
- Surround Options:
  - Modern Surround
  - Contemporary Surround. w/Trimmable Panel
  - Trimmable Panel

## Insert Specifications

BTU Maximum Input - NG	20,000 BTU		
BTU Minimum Output*	7,900 BTU		
Heating Area	1,000 ft²		
P4 Efficiency	74.5%		
Glass Size	345½ in²		
Minimum Install Dims.	HEIGHT 27½"	WIDTH 20¼"	DEPTH 14¼"

\* Turn down is based on a 50% valve and AFUE efficiencies output.



High Definition Log Set



Coal



Tray Burner with Crushed Glass





## Design Features

- Clean Face Look — No Louvers
- Cast Iron Heat Exchanger
- SIT Valve 820 (Standing Pilot)
- SIT Valve 885 (IPI System with Remote)
- Glass Size: 21¾" x 13¾", 300 in²
- High Definition Log Set
- Easy Access Burner Switch
- 110 CFM Room Fan (with variable control)
- Limited Lifetime Warranty

## Available Options

- Hearth Riser
- Remote or Thermostat Control
- Glass or Log Set
- Liner Options:
  - Brick or Fluted Liner with Logs
  - Black Enameled Liner with Glass or Logs
- Surround Options:
  - Modern Surround
  - Contemporary Surround
  - Slim Surround
  - Extruded Surround
  - 4-Sided Extruded Surround
  - Trimmable Panel
- **ELITE EDITION** SURROUND PANELS

## Insert Specifications

BTU Maximum Input - NG	23,000 BTU		
BTU Minimum Output*	8,000 BTU		
Heating Area	1,200 ft²		
Steady State Efficiency	81%		
Glass Size	300 in²		
Minimum Install Dims.	HEIGHT 18¼"	WIDTH 24¼"	DEPTH 14"

\* Turn down is based on a 50% valve and AFUE efficiencies output.



Fluted Liner with Log Set



Black Glass with Decorative Stones



Brick Liner with Log Set





E30 Fireplace Insert – Powder Coated Finish Borderview Plus 4S Surround Panel, Fluted Liner, and Glass



E30 Fireplace Insert – Modern Surround Panel, Black Enameled Liner, Driftwood, and Hearth Riser



E30 Fireplace Insert – Brushed Antique Copper Borderview Surround, Fluted Liner, and Log Set

## Design Features

- Clean Face Look — No Louvers
- SIT Valve 820 (Standing Pilot)
- SIT Valve 885 (IPI System with Remote)
- Glass Size: 26 $\frac{1}{4}$ " x 16", 420 in<sup>2</sup>
- High Definition Log Set
- Easy Access Burner Switch
- 150 CFM Room Fan (with variable control)
- Limited Lifetime Warranty

## Available Options

- Hearth Riser & Adjustable Hearth Riser
- Remote or Thermostat Control
- Glass, Log Set, or Driftwood
- Liners Options:
  - Brick Liner with Log Set
  - Black Enameled Liner with Glass or Log Set
  - Fluted Liner
  - Ledgerstone Liner
- Surround Options:
  - Modern Surround
  - Contemporary Surround
  - Slim Surround
  - Extruded Surround
  - 4-Sided Extruded Surround
  - Trimmable Panel

**ELITE EDITION** SURROUND PANELS

## Insert Specifications

BTU Maximum Input - NG	33,000 BTU		
BTU Minimum Output*	10,000 BTU		
Heating Area	1,700 ft²		
Steady State Efficiency	81%		
Glass Size	420 in²		
Minimum Install Dims.	HEIGHT 19 7/8"	WIDTH 27 7/8"	DEPTH 16"

\* Turn down is based on a 50% valve and AFUE efficiencies output.



Brick Liner with Log Set



Black Glass Tray Burner



Black Enameled Liner with Driftwood





E33 Fireplace Insert – Forgeworks Surround, Brick Liner, and Log Set



E33 Fireplace Insert – Contemporary Surround Panel, Porcelain Liner with Rock Set



E33 Fireplace Insert – Brushed Nickel Borderview Surround, Fluted Liner, and Driftwood

## Design Features

- Clean Face Look — No Louvers
- SIT Valve 820 (Standing Pilot)
- SIT Valve 885 (IPI System with Remote)
- Glass Size: 28½" x 18", 513 in<sup>2</sup>
- High Definition Log Set
- Easy Access Burner Switch
- 150 CFM Room Fan (with variable control)
- Limited Lifetime Warranty
- Quick Access Valve Controls  
Contemporary and Extruded Panels Only

## Available Options

- Hearth Riser & Adjustable Hearth Riser
- Remote or Thermostat Control
- Glass, Log Set, Driftwood, or Rock Set
- Liners Options:
  - Brick Liner with Logs
  - Black Enameled Liner with Glass or Logs
  - Fluted Liner
  - LedgeStone Liner
- Surround Options:
  - Modern Surround
  - Contemporary Surround
  - Slim Surround
  - Extruded Surround
  - Trimmable Panel
  - **ELITE EDITION** SURROUND PANELS

## Insert Specifications

BTU Maximum Input - NG	34,000 BTU
BTU Minimum Output*	11,000 BTU
Heating Area	1,800 ft <sup>2</sup>
Steady State Efficiency	82%
Glass Size	513 in <sup>2</sup>
Minimum Install Dims.	HEIGHT 20" WIDTH 32" DEPTH 17½"

\* Turn down is based on a 50% valve and AFUE efficiencies output.



Midnight Bronze Forgeworks Surround



Rock Set



Log Set with LedgeStone Liner





E44 Fireplace Insert – Borderview Panel, Ledgestone Liner, and Log Set



E44 Fireplace Insert – Contemporary Surround Panel, Fluted Liner, and Log Set



E44 Fireplace Insert – Contemporary Surround, Brick Liner, Log Set, and Hearth Riser

### Design Features

- Clean Face Look — No Louvers
- SIT Valve 885 (IPI System with Remote)
- Glass Size: 30 5/8" x 22 1/4", 681 in<sup>2</sup>
- High Definition Log Set
- Remote Control Included
- 150 CFM Room Fan (with variable control)
- Limited Lifetime Warranty

### Available Options

- Hearth Riser
- Thermostat Control
- Liners Options:
  - Brick Liner
  - Black Enameled Liner
  - Fluted Liner
  - Ledgestone Liner
- Surround Options:
  - Modern Surround
  - Cape Cod Doors
  - Contemporary Surround
  - Extruded Surround
  - Borderview Surround | **ELITE EDITION**
  - 4-Sided Extruded Surround
  - Trimmable Panel

### Insert Specifications

BTU Maximum Input - NG	42,000 BTU		
BTU Minimum Output*	13,000 BTU		
Heating Area	2,300 ft <sup>2</sup>		
Steady State Efficiency	82%		
Glass Size	681 in <sup>2</sup>		
Minimum Install Dims.	HEIGHT 24"	WIDTH 34½"	DEPTH 20¾"

\* Turn down is based on a 50% valve and AFUE efficiencies output.



Cape Cod Doors



Hearth Riser



Log Set with Ledgestone Liner



# Unit Specifications

## Performance

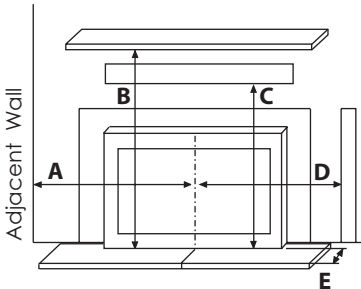
	Q1 PORTRAIT GAS INSERT	E20 SMALL GAS INSERT	E30 MEDIUM GAS INSERT	E33 LARGE GAS INSERT	E44 EXTRA LARGE GAS INSERT
BTU Maximum input - NG / LP	20,000 / 18,500	23,000 / 21,300	33,000 / 28,000	34,000 / 31,000	42,000 / 36,000
Turn Down* - Valve 820 / Valve 885	50% / 33%	50% / 33%	50% / 33%	50% / 33%	N/A / 33%
Heat Exchanger	Steel	Cast Iron	Steel	Steel	Steel
SIT Valve 820 (Standing Pilot)	Available	Available	Available	Available	
SIT Valve 885 (IPI)	Available	Available	Available	Available	Available
Efficiency - Steady State**	76%	81%	81%	82%	82%
Efficiency - AFUE	67%	71%	63%	66%	66.%
Efficiency - FE rating†	74.5%	61%	70%	70%	63%
Glass Size	17½" x 19¾", 345½ in²	21¾" x 13¾", 300 in²	26¼" x 16", 420 in²	28½" x 18", 513 in²	30 ¾" x 22¼", 681 in²
Convection Fan	150 CFM	110 CFM	150 CFM	150 CFM	150 CFM

## Installation†

Installation <sup>‡</sup>	Q1			E20			E30			E33			E44		
	PORTRAIT GAS INSERT			SMALL GAS INSERT			MEDIUM GAS INSERT			LARGE GAS INSERT			EXTRA LARGE GAS INSERT		
Min. Install Dims.	HEIGHT 27 ½"	WIDTH 20 ¼"	DEPTH 14 ¼"	HEIGHT 18 ¼"	WIDTH 24 ¼"	DEPTH 14"	HEIGHT 19 ⅞"	WIDTH 27 ⅞"	DEPTH 16"	HEIGHT 20"	WIDTH 32"	DEPTH 17 ½"	HEIGHT 24"	WIDTH 34 ½"	DEPTH 20 ⅜"
LP Conversion Kit (SP)	Standard			Standard			Standard			Standard					
LP Conversion Kit (IPI)	Optional			Optional			Optional			Optional			Optional		
Venting (Direct Vent)	3" x 3"			3" x 2"			3" x 3"			3" x 3"			3" x 3"		
Weight	170 lbs			90 lbs			116 lbs			135 lbs			210 lbs		
Wood ZC Fireplace Approved	Standard			Standard			Standard			Standard			Standard		
ZC Floor Removal Approved	Standard						Standard			Standard					

## Clearance to Combustibles

	Q1	E20	E30	E33	E44
A - center of unit to side wall	16½"	19½"	21"	24"	23½"
B - bottom of unit to bottom of 12" mantle	41"	39¾"	36"	36"	40"
C - unit bottom to max. ¾" combustible facing	35¼"	37½"	30"	30"	40"
D - center of unit to side facing	10"	16½"	21"	23"	23"
E - front of door to edge of floor protection	12"	13"	16"	16"	16"‡



\* Turn down based on AFUE efficiencies on low.  
\*\* Steady state rating based on conventional venting configuration.  
† E30 and E33 efficiency based on the P4 measured efficiency rating of the IPI models.  
‡ Based on a minimum ½" raised hearth (18" flush).

# Available Options

## Surround Panels

Surround Panels	Q1		E20		E30		E33		E44	
	PORTRAIT GAS INSERT		SMALL GAS INSERT		MEDIUM GAS INSERT		LARGE GAS INSERT		EXTRA LARGE GAS INSERT	
	HEIGHT	WIDTH	HEIGHT	WIDTH	HEIGHT	WIDTH	HEIGHT	WIDTH	HEIGHT	WIDTH
Contemporary Surround			23 7⁄8"	35 3⁄8"	25"	39 3⁄4"	26 1⁄2"	44 1⁄8"	30 1⁄8"	45"
Oversize Contemporary Surround			26 7⁄8"	37 3⁄8"	29"	39 7⁄8"	29"	44 1⁄8"		
Extruded Surround			23 7⁄8"	35 3⁄8"	25 1⁄8"	39 3⁄4"	26 1⁄2"	44 1⁄8"	30 1⁄8"	45"
Oversize Extruded Surround					29"	39 3⁄4"	29"	44 1⁄8"		
Modern Surround	30"	30"	23 7⁄8"	35 3⁄8"	25"	39 3⁄4"	26 1⁄2"	43 1⁄2"	30 1⁄8"	45"
Slim Surround			21"	29 3⁄4"	22"	33 1⁄4"	22 1⁄4"	36"		
Cape Cod Doors									30"	42"
4-Sided Extruded Surround			29 5⁄8"	35 3⁄8"	31 1⁄2"	39 3⁄4"			37"	45"
Contemporary Sur. w/Trimmable Panel	32"	36"								
Borderview Surround – ELITE EDITION			24"	37 1⁄4"	26 1⁄8"	40"	25 1⁄8"	42"	28 3⁄4"	45"
Borderview Plus Surround – ELITE EDITION			24"	37 1⁄4"	26 1⁄8"	40"	25 1⁄8"	42"		
Extruded Plus Surround – ELITE EDITION			24 1⁄8"	36 7⁄8"	26"	40"	25 1⁄8"	42"		
Modern Plus Surround – ELITE EDITION			22 5⁄8"	34 1⁄4"	25 3⁄8"	38 1⁄2"	24 5⁄8"	39"		
Borderview Plus 4S Surround – ELITE EDITION			26 7⁄8"	35 3⁄4"	31"	40"				
Forgeworks Surround – ELITE EDITION					26 1⁄8"	40"	25 1⁄8"	42"		
Trimmable Panel	32"	36"	28 3⁄4"	41 3⁄4"	38"	46"	34"	46"	36"	55"
4-Sided Trimmable Panel			39 3⁄8"	41 3⁄4"	41 1⁄8"	46"			47"	55"

## Firebox Liners

	Q1 PORTRAIT GAS INSERT	E20 SMALL GAS INSERT	E30 MEDIUM GAS INSERT	E33 LARGE GAS INSERT	E44 EXTRA LARGE GAS INSERT
Brick Liner	✓	✓	✓	✓	✓
Black Enameled Steel Liner	✓	✓	✓	✓	✓
Fluted Liner		✓	✓	✓	✓
Ledgestone Liner	✓		✓	✓	✓

## Burner Variations

	Q1 PORTRAIT GAS INSERT	E20 SMALL GAS INSERT	E30 MEDIUM GAS INSERT	E33 LARGE GAS INSERT	E44 EXTRA LARGE GAS INSERT
High Definition Log Set	✓	✓	✓	✓	✓
Driftwood Log Set			✓	✓	
Glass Burner (Black Glass)	Crushed Glass	Glass Beads	Glass Beads	Glass Beads	
Coal Burner	✓				
High Definition Rock Set				✓	

## Additional Options

	Q1 PORTRAIT GAS INSERT	E20 SMALL GAS INSERT	E30 MEDIUM GAS INSERT	E33 LARGE GAS INSERT	E44 EXTRA LARGE GAS INSERT
Decorative Stones (Glass Tray Burners Only)		✓	✓		
Hearth Riser (N/A with 4-Sided Surround Panels)		2"H 40¾"W	2"H 43½"W	2"H 45½"W	1 ½"H 46¾"W
Adjustable Hearth Riser (3½" to 6" height)			45½"W 47⁄8"D	45½"W 47⁄8"D	
Programmable Thermostat	✓	✓	✓	✓	✓
Proflame Remote Control	Standard with IPI Optional with 820 Nova	Optional	Standard with IPI Optional with 820 Nova	Standard with IPI Optional with 820 Nova	Standard



Surround Panels



CONTEMPORARY

Available for the E20, E30, E33, & E44



MODERN

Available for the E20, E30, E33, & E44



SLIM

Available for the E20, E30, & E33



EXTRUDED

Available for the E20, E30, E33, & E44



CAPE COD DOORS

Available for the E44



4 - SIDED EXTRUDED

Available for the E20, E30, & E44



Q1 MODERN

Available for the Q1



CONTEMPORARY W/TRIMMABLE PANEL

Available for the Q1

ELITE EDITION  
SURROUND PANELS



BORDERVIEW

Available for the E20, E30, E33 & E44 (E44 only in Brushed Nickel)  
Brushed Nickel • Brushed Antique Copper • Powder Coated Finish



BORDERVIEW PLUS

Available for the E20, E30 & E33  
Brushed Nickel • Brushed Antique Copper • Powder Coated Finish



MODERN PLUS

Available for the E20, E30 & E33  
Powder Coated Finish



EXTRUDED PLUS

Available for the E20, E30 & E33  
Powder Coated Finish



BORDERVIEW PLUS 4S

Available for the E20 & E30  
Powder Coated Finish



FORGEWORKS

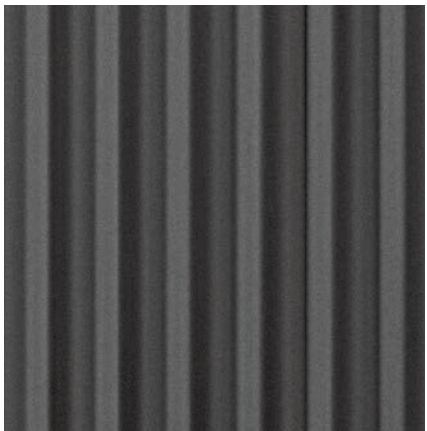
Available for the E30 & E33  
Midnight Bronze



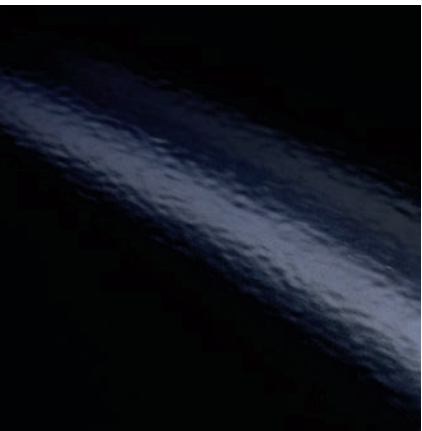
Design Elements



**BRICK LINER**  
Available for the Q1, E20, E30, E33, and E44



**FLUTED LINER**  
Available for the E20, E30, E33, and E44



**BLACK ENAMELED STEEL LINER**  
Available for the Q1, E20, E30, E33, and E44



**LEDGESTONE LINER**  
Available for the Q1, E30, E33, and E44



**TRAY BURNER WITH GLASS**  
Beads for the E20, E30 and E33 / Crushed for Q1



**HIGH DEFINITION LOG SET**  
Available for the Q1, E20, E30, E33, and E44



**DRIFTWOOD LOG SET**  
Available for the E30 and E33



**COAL BURNER**  
Available for the Q1



**HIGH DEFINITION ROCK SET**  
Available for the E33

Learn more about our products at

**enviro.com**

- Detailed Product lineup
- Model Photo Galleries
- Downloadable Manual PDF's
- Unit Comparison Charts
- Youtube Burn Example Videos
- Online Brochures
- Dealer Locator Tool

